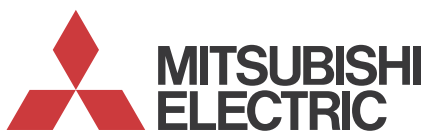


The MSZ-LN range is a wall mounted system that blends energy efficiency with a sophisticated streamlined design. Finished with a range of deep, rich colours and a premium quality feel, this range utilises low GWP R32 refrigerant.

Key Features

- New stylish design, available in Ruby Red, Onyx Black, Pearl White and Natural White colours
- Highly energy efficient operation, utilising low GWP R32 refrigerant
- i-see Sensor provides customised comfort by automatically monitoring room occupancy, position and body temperatures
- Built in Wi-Fi interface enabling control and monitoring via the MELCloud app
- Double vanes operate independently to distribute airflow evenly throughout the room
- Plasma Quad Plus filter uses powerful plasma technology to filter out even microscopic particles
- Dual-Barrier Coating to the heat exchanger, fan and air duct prevents dust and grease accumulation
- Quiet operation with industry leading low noise levels
- Weekly timer
- Replace Technology available



Air Conditioning

Product Information

MSZ-LN Inverter Heat Pump Wall Mounted System

Making a
World of
Difference



Ruby Red (R)



Pearl White (V)



Onyx Black (B)



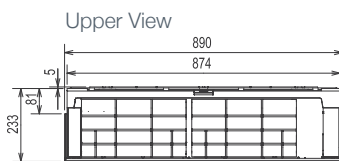
Natural White (W)



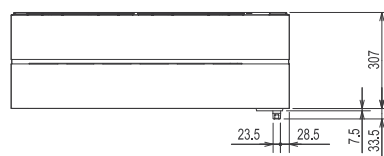
| MSZ-LN - INDOOR UNITS | | MSZ-LN25VG R/B/V/W | MSZ-LN35VG R/B/V/W | MSZ-LN50VG R/B/V/W | MSZ-LN60VG R/B/V/W |
|---------------------------------|-----------------------------|---------------------|--------------------|---------------------|---------------------|
| CAPACITY (kW) | Heating (nominal) | 3.2 (0.8 - 5.4) | 4.0 (1.0 - 6.3) | 6.0 (1.0 - 8.2) | 6.8 (1.8 - 9.3) |
| | Cooling (nominal) | 2.5 (1.0 - 3.5) | 3.5 (0.8 - 4.0) | 5.0 (1.0 - 6.0) | 6.1 (1.4 - 6.9) |
| | Heating (UK) | 2.64 (0.66 - 4.45) | 3.3 (0.83 - 5.2) | 4.94 (0.82 - 6.75) | 5.6 (1.48 - 7.66) |
| | Cooling (UK) | 2.48 (0.99 - 3.47) | 3.47 (0.79 - 3.96) | 4.95 (0.99 - 5.94) | 6.05 (1.38 - 6.84) |
| SHF (nominal) | | 0.97 | 0.90 | 0.77 | 0.75 |
| COP / EER (nominal) | | 5.52 / 5.15 | 5.00 / 4.27 | 4.05 / 3.62 | 3.76 / 3.41 |
| SCOP / SEER (BS EN14825) | | 5.2 / 10.5 | 5.1 / 9.5 | 4.6 / 8.5 | 4.6 / 7.5 |
| ErP ENERGY EFFICIENCY CLASS | Heating/Cooling | A+++ / A+++ | | A++ / A+++ | |
| AIRFLOW (l/s) | Heating (SLo-Lo-Mid-Hi-SHi) | 67-95-118-142-240 | 71-97-118-142-228 | 90-107-142-178-262 | 110-158-192-227-262 |
| | Cooling (SLo-Lo-Mid-Hi-SHi) | 71-97-118-147-198 | 71-97-118-147-213 | 95-127-148-177-232 | 118-147-177-212-262 |
| PIPE SIZE MM (in) | Gas | 9.52 (3/8") | 9.52 (3/8") | 9.52 (3/8") | 12.7 (1/2") |
| | Liquid | 6.35 (1/4") | 6.35 (1/4") | 6.35 (1/4") | 6.35 (1/4") |
| SOUND PRESSURE LEVEL (dBA) | Heating (SLo-Lo-Mid-Hi-SHi) | 19-24-29-36-45 | 19-24-29-36-45 | 25-29-34-39-47 | 29-37-41-45-49 |
| | Cooling (SLo-Lo-Mid-Hi-SHi) | 19-23-29-36-42 | 19-24-29-36-43 | 27-31-35-39-46 | 29-37-41-45-49 |
| SOUND POWER LEVEL (dBA) | | 58 | 58 | 60 | 65 |
| DIMENSIONS (mm) | Width x Depth x Height | 890 x 233 x 307 | 890 x 233 x 307 | 890 x 233 x 307 | 890 x 233 x 307 |
| WEIGHT (kg) | | 15.5 | 15.5 | 15.5 | 15.5 |
| ELECTRICAL SUPPLY | | Fed by Outdoor Unit | | Fed by Outdoor Unit | |
| FUSE RATING (BS88) - HRC (A) | | 6 | 6 | 6 | 6 |
| INTERCONNECTING CABLE No. CORES | | 4 | 4 | 4 | 4 |

| MUZ-LN - OUTDOOR UNITS | | MUZ-LN25VG | MUZ-LN35VG | MUZ-LN50VG | MUZ-LN60VG |
|--|---------------------------|-----------------|-----------------|------------------|------------------|
| SOUND PRESSURE LEVEL (dBA) | Heating/Cooling | 49 / 46 | 50 / 49 | 54 / 51 | 55 / 55 |
| | Cooling | 60 | 61 | 64 | 65 |
| WEIGHT (kg) | | 35 | 35 | 40 | 55 |
| DIMENSIONS (mm) | Width x Depth x Height | 800 x 285 x 550 | 800 x 285 x 550 | 800 x 285 x 714 | 840 x 330 x 880 |
| ELECTRICAL SUPPLY | | 220-240v, 50Hz | | 220-240v, 50Hz | |
| PHASE | | Single | | Single | |
| SYSTEM POWER INPUT (kW) | Heating/Cooling (nominal) | 0.580 / 0.485 | 0.800 / 0.820 | 1.480 / 1.380 | 1.810 / 1.790 |
| | Heating/Cooling (UK) | 0.523 / 0.406 | 0.722 / 0.686 | 1.335 / 1.151 | 1.632 / 1.494 |
| STARTING CURRENT (A) | | 3.0 | 4.0 | 6.8 | 7.9 |
| SYSTEM RUNNING CURRENT (A) | Heating/Cooling [MAX] | 3.0 / 2.5 [7.1] | 4.0 / 3.9 [9.9] | 6.8 / 6.3 [13.9] | 7.9 / 7.9 [15.2] |
| FUSE RATING (BS88) - HRC (A) | | 10 | 10 | 16 | 16 |
| MAINS CABLE No. CORES | | 3 | 3 | 3 | 3 |
| MAX PIPE LENGTH (m) | | 20 | 20 | 20 | 30 |
| MAX HEIGHT DIFFERENCE (m) | | 12 | 12 | 12 | 15 |
| CHARGE (kg) / CO ₂ EQUIVALENT (t) - R32 (GWP 675) - 7m | | 1.0 / 0.68 | 1.0 / 0.68 | 1.25 / 0.85 | 1.45 / 0.98 |
| MAX ADDED QUANTITY (kg) / CO ₂ EQUIVALENT (t) - R32 (GWP 675) | | 0.26 / 0.18 | 0.26 / 0.18 | 0.26 / 0.18 | 0.46 / 0.32 |

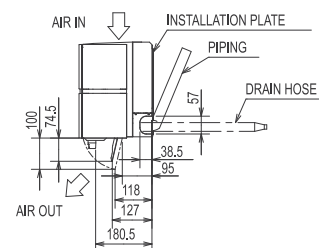
PRODUCT DIMENSIONS



Front View



Side View



Telephone: 01707 282880

email: air.conditioning@meuk.mee.com

web: airconditioning.mitsubishielectric.co.uk microsite: timeforR32.co.uk

UNITED KINGDOM Mitsubishi Electric Europe Living Environment Systems Division

Travellers Lane, Hatfield, Hertfordshire, AL10 8XB, England General Enquiries Telephone: 01707 282880 Fax: 01707 278881

IRELAND Mitsubishi Electric Europe Westgate Business Park, Ballymount, Dublin 24, Ireland

Telephone: Dublin (01) 419 8800 Fax: Dublin (01) 419 8890 International code: (003531)

Country of origin: United Kingdom - Japan - Thailand - Malaysia. ©Mitsubishi Electric Europe 2017. Mitsubishi and Mitsubishi Electric are trademarks of Mitsubishi Electric Europe B.V. The company reserves the right to make any variation in technical specification to the equipment described, or to withdraw or replace products without prior notification or public announcement. Mitsubishi Electric is constantly developing and improving its products. All descriptions, illustrations, drawings and specifications in this publication present only general particulars and shall not form part of any contract. All goods are supplied subject to the Company's General Conditions of Sale, a copy of which is available on request. Third-party product and brand names may be trademarks or registered trademarks of their respective owners.

Note: The fuse rating is for guidance only. Please refer to the relevant databook for detailed specification. It is the responsibility of a qualified electrician/electrical engineer to select the correct cable size and fuse rating based on current regulation and site specific conditions. Mitsubishi Electric's air conditioning equipment and heat pump systems contain a fluorinated greenhouse gas, R410A(GWP:2088), R32(GWP:675), R407C (GWP:1774) or R134a (GWP:1430). These GWP values are based on Regulation(EU) No 517/2014 from IPCC 4th edition. In case of Regulation(EU) No.626/2011 from IPCC 3rd edition, these are as follows. R410A(GWP:1975), R32(GWP: 550), R407C (GWP:1650) or R134a (GWP:1300).



www.greengateway.mitsubishielectric.co.uk

Mitsubishi Electric UK's commitment to the environment

Follow us @meuk_Jes
Follow us @green_gateway

Mitsubishi Electric
Living Environmental Systems UK

[mitsubishielectric2](https://www.youtube.com/mitsubishielectric2)

Effective as of February 2017

